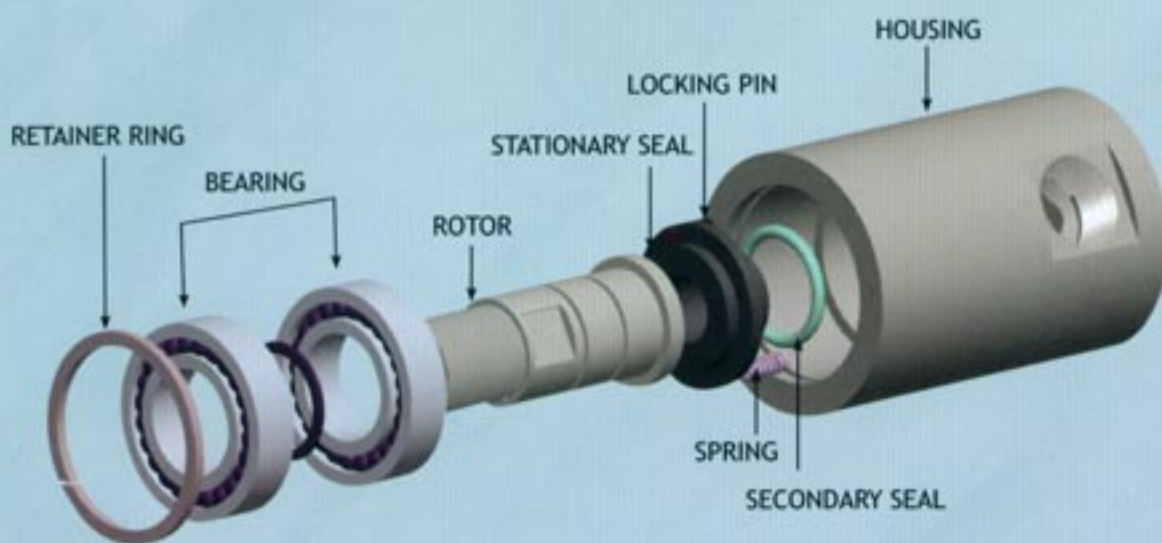


102 Series ROTARY UNION



Parts	Material
Housing	S.S.
Spring	S.S.
Locking Pin	Std.
Secondary Seal	Std.
Stationary Seal	Carbon
Rotor	S.S.
Bearing	Std.
Retainer Ring	Std.

The **CARBON**™ brand 102 series rotary union is designed to supply fluid to high speed, multi spindles on automotive transfer lines.

FEATURES :

- The housing & the rest of metallic components are made with Stainless Steel.
- The elastomers are made with VITON, NITRILE, PTFE, HYPALON, SILICON as per required.
- The springs are located out of the fluid flow to avoid pressure drops and turbulence causing noise and vibrations.

MODEL A : Standard sealing with Carbon Graphite to Tungsten Carbide Seal.

MODEL B : Tungsten Carbide to Tungsten Carbide
Silicone Carbide to Silicone Carbide Seal
Tungsten Carbide to Ceramic Seal.

#Optional : Exclusive Large Double Row Angular Contact Bearings in a Compact, Rigid Design with high tolerance to hose side loading.

APPLICATIONS : For Water, Air, Gas, Hydraulic Oil and High Abrasive Chemicals at high pressure.

SIZE : 3/8" BSP to 2" BSP.

THREADED ROTOR : AS PER ISO 228 /NPT/Metric

#Optional : QUICK RELEASE NIPPLE [FLANGED END]

BODY : Radial or Axial R.H. FEMALE THREAD AS PER ISO 228 OR NPT

TEMPERATURE (Max) : Air & Water : 90° C

Hyd. Oil & Gas : 120° C

PRESSURE (Max) : Air, Gas & Water : 35 Bar

Hyd. Application : 100 Bar

SPEED (Max) :

Size : 1/4" - 3/4" : 3000 RPM

Size : 1" - 2" : 500 RPM

Ordering Example For Rotary Joint

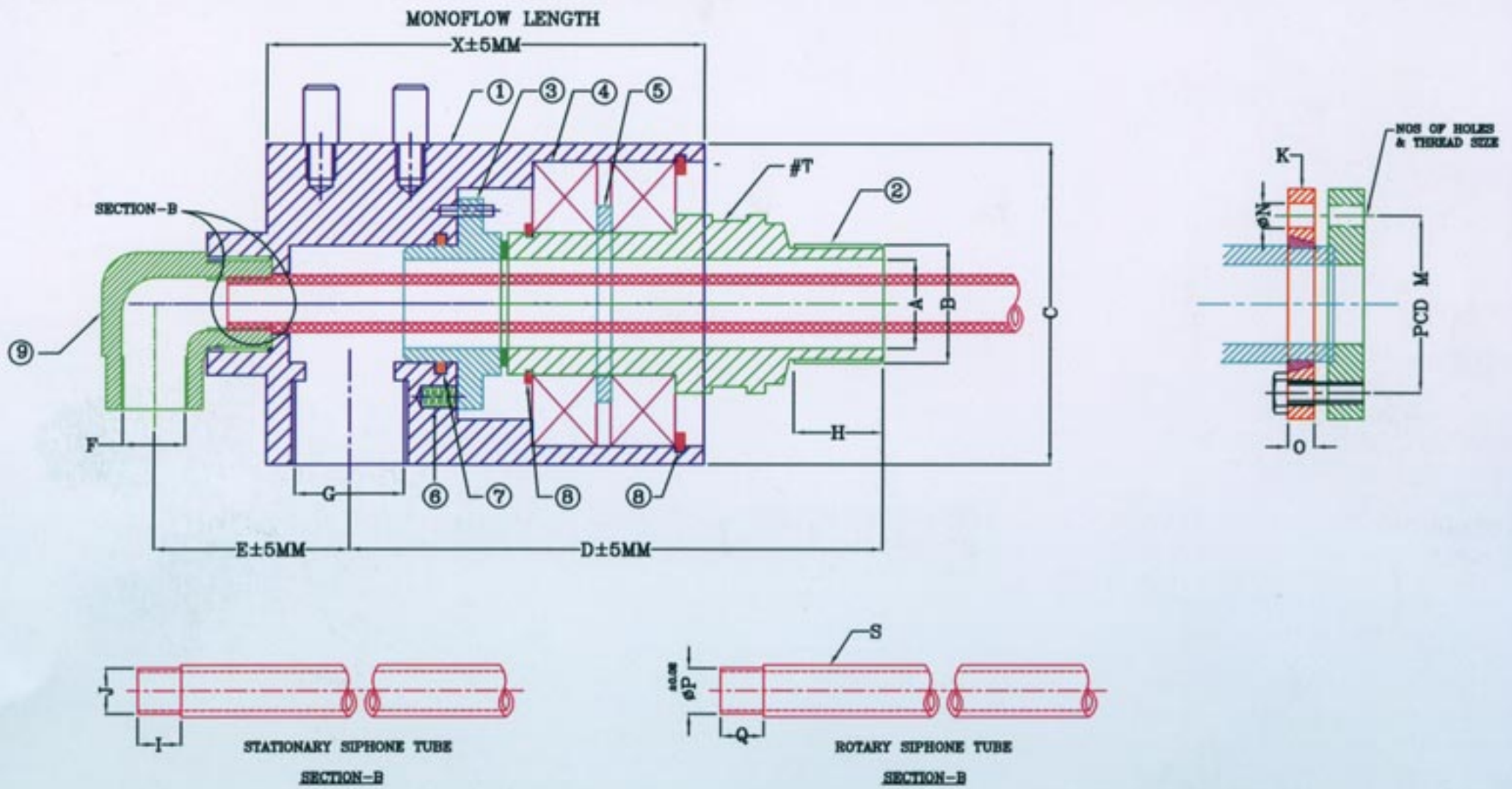
CF102 19 003 DS A

Basic Series : CF102
 SIZE ¾ : 19
 PREFIX
 Right Hand Thread : 001
 Left Hand Thread : 002
 Flanged End : 003

M : Mono Flow Service
 DS : Dual Flow With
 Stationary Siphon Service

APPLICATIONS
 A: Hydraulic Oil
 B: Water
 C: Gas
 D: Air
 E: Abrasive Chemical

Shaft / Roller that turns anticlockwise : Rotor Thread "RH".
 Shaft / Roller that turns clockwise : Rotor Thread "LH"



MODEL	A	B	C	D	E	F	G	H	I	J	K	M	N	NOS OF HOLES	O	#X	P	Q	S	#T
CF10207	Ø7	1/4"	Ø55	70	40	3/8"	3/8"	18	12	06	55	40	8	4Nos. X 6MM	10	132	05	15	06mm	16
CF10210	Ø9	3/8"	Ø55	70	40	3/8"	3/8"	18	12	06	55	40	8	4Nos. X 6MM	10	132	05	15	06mm	16
CF10212	Ø12	1/2"	Ø65	115	60	3/8"	1/2"	22	16	1/8"	70	50	9	4Nos. X 8MM	10	130	10	20	1/8"	24
CF10219	Ø19	3/4"	Ø78	140	62	1/2"	3/4"	25	19	1/4"	75	55	9	4Nos. X 8MM	12	158.7	13	23	1/4"	28
CF10225	Ø25	1"	Ø90	149	67	3/4"	1"	25	21	3/8"	80	60	9	4Nos. X 8MM	12	172	16	25	3/8"	38
CF10232	Ø32	1.1/4"	Ø97	169	70	1"	1.1/4"	30	21	1/2"	95	70	11	4Nos. X 10MM	12	196	22	25	1/2"	43
CF10238	Ø38	1.1/2"	Ø110	184	78	1.1/4"	1.1/2"	32	26	3/4"	105	80	11	4Nos. X 10MM	15	218	26	30	3/4"	48
CF10250	Ø50	2"	Ø118	209	118	1.1/2"	2"	38	26	1"	105	80	11	4Nos. X 12MM	15	248	32	30	1"	65

All dimension are in MM
 Drawing above 2" Rotary Union available on request.
 Operation at maximum pressure combined with maximum speed should be avoided.
 If operational condition are marginal consult out engineering department.

#X - Monoflow Length Rotary Union
 #T- Flat Wrench

CARBON & FIBRE PRODUCTS

L/464, Nr. Old water tank, G.I.D.C. Odhav, Ahmedabad-382415. INDIA

TeleFax :+91-79-22890503, 22877260

E-mail : carbon2000@hotmail.com Website : www.rotaryjointindia.co.in