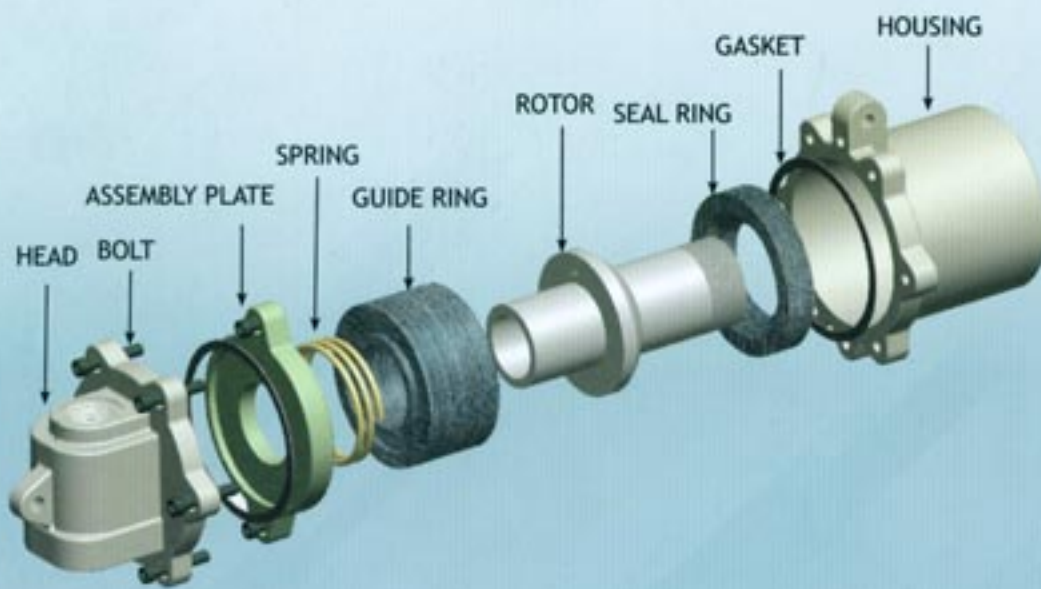


301 Series ROTARY JOINT

FOR STEAM APPLICATION OPEN GEAR PAPER MACHINES



Parts	Material
Housing	C.I. / C.S.
Gasket	Graphited Asbestos
Seal Ring	Carbon / CFT
Rotor	S.S. / M.S. Hard Chrome Plate
Guide Ring	Carbon / CFT
Spring	S.S.
Assembly Plate	C.I.
Head	C.I.
Bolt	Std.

ADVANTAGES

- ▲ Joint Life is extended.
- ▲ Corrosion resistant special carbon seal ring for better life.
- ▲ Carbon seal ring use in diff. grade as per application.
- ▲ Sleeves often reusable reducing repair cost.
- ▲ The hard oxide layer make the sleeve corrosion resistant.
- ▲ Wear of the sleeves is minimized in the seal and bearings areas.

SIZE : ½" BSP to 4" BSP.

For Stationary Siphon Type

THREADED ROTOR : AS PER ISO 228 /NPT/Metric

#Optional : QUICK RELEASE NIPPLE [FLANGED END]

TEMPERATURE (Max): Steam : UP TO 207° C

PRESSURE (Max): Steam : 250 PSI

Additional Features

- ▲ Exceptionally long service without lubrication
- ▲ Handles a wide range of operating conditions
- ▲ Reduces expensive downtime with wear indicator
- ▲ Competitively priced Available from stock

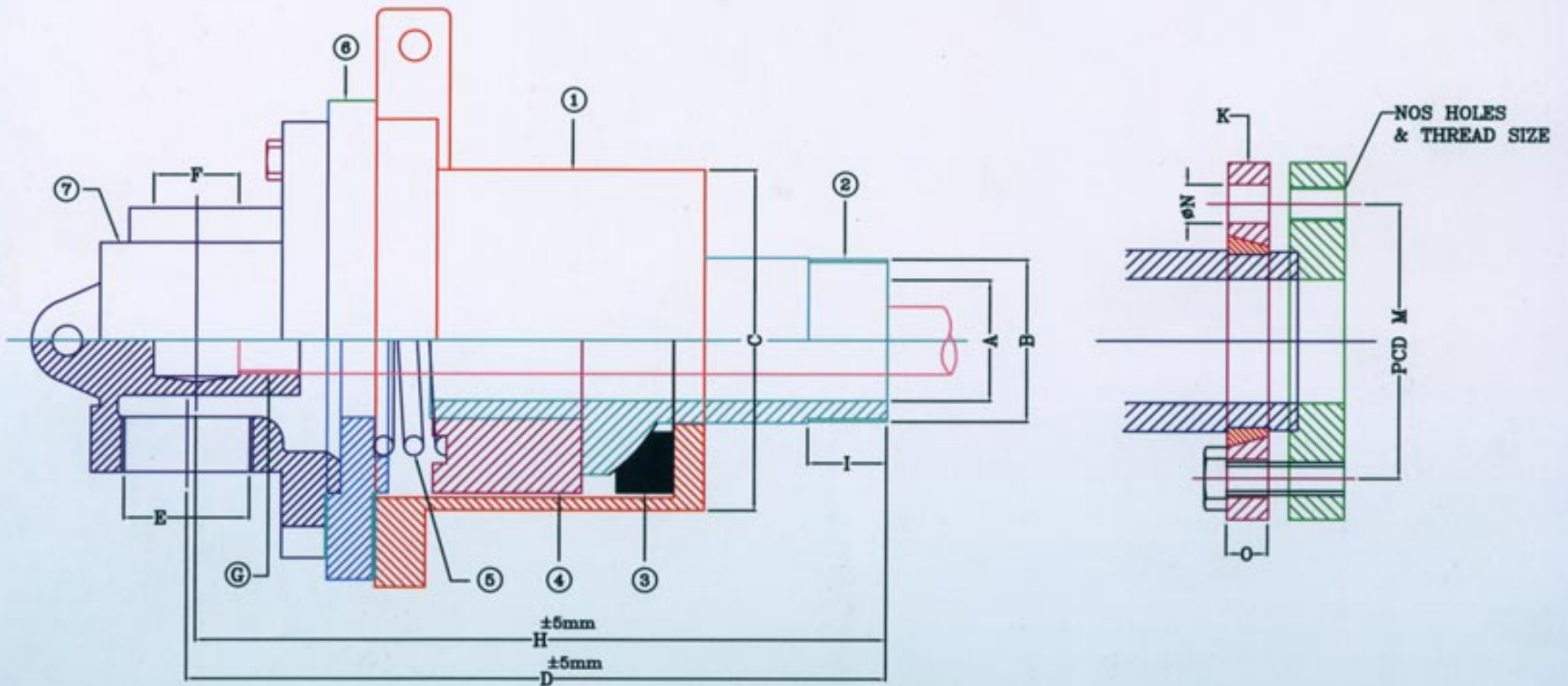
Ordering Example For Rotary Joint

CF301 19 003 DS

Basic Series : CF301
 SIZE 3/4" : 19
 PREFIX
 Right Hand Thread : 001
 Left Hand Thread : 002
 Flanged End : 003

M : Mono Flow Service
 DS : Dual Flow With Stationary Siphon Service

Shaft / Roller that turns anticlockwise : Rotor Thread "RH".
 Shaft / Roller that turns clockwise : Rotor Thread "LH"



MODEL	A	B	C	D	E	F	G	H	I	K	M	N	O	NOS OF HOLES
CF30119	Ø19	¾"	69	198	½"	½"	¼"	200	25	80	60	60	12	4Nos. X 8MM
CF30125	Ø25	1"	77	191	¾"	½"	¼" or ¾"	190	29	95	70	70	12	4Nos. X 10MM
CF30132	Ø31	1.¼"	88	237	1"	¾"	⅝" or ½"	236	30	105	80	80	15	4Nos. X 10MM
CF30138	Ø37	1.½"	118	239	1.¼"	¾" or 1"	¾"	239	31	130	100	100	15	4Nos. X 12MM
CF30150	Ø44	2"	124	254	1.½"	1"	¾"	250	29	150	120	120	15	4Nos. X 12MM

All dimension are in MM
 Drawing above 2" Rotary joint available on request.
 Operation at maximum pressure combined with maximum speed should be avoided.
 If operational condition are marginal consult out engineering department.

CARBON & FIBRE PRODUCTS

L/464, Nr. Old water tank, G.I.D.C. Odhav, Ahmedabad-382415. INDIA

TeleFax :+91-79-22890503, 22877260

E-mail : carbon2000@hotmail.com Website : www.rotaryjointindia.co.in